

Jmakepdfx User Manual

Version 0.1b

Nicola L.C. Talbot

<http://www.dickimaw-books.com/>

8th September, 2012

Contents

1	Introduction	1
2	Converting a PDF File	1
3	Application Settings	3

1 Introduction

Jmakepdfx is a Java GUI front-end application that uses GhostScript to convert PDF files to PDF/X compliant. This application comes with NO WARRANTY. In order to use this application you need to have both Java and GhostScript installed. This uses GhostScript's `/prepress` setting, which is analogous to Acrobat Distiller's "Prepress Optimized". This will likely create a larger PDF than your original.

To run the application, Windows users can select "Jmakepdfx" from the Start menu. Bash users can run the application from the command line using the bash script `jmakepdfx` in the application's `bin` subdirectory. Alternatively, you can run Java on the `jmakepdfx.jar` file. For example:

```
java -jar jmakepdfx.jar
```

Windows users have an additional script `jmakepdfxc.bat`, which is designed to be run from the command prompt. Use `-debug` switch to print to stdout the GhostScript commands being executed. For example (full path names may be required):

Windows: From the command prompt:

```
jmakepdfxc -debug
```

Unix-like: From a terminal:

```
jmakepdfx -debug
```


Alternatively: Using Java directly:

```
java -jar jmakepdfx.jar -debug
```

2 Converting a PDF File

On startup, the main window is as shown in [Figure 1](#).

1. Select the PDF file that needs conversion. This can be done via the File

→ `Open...` menu item or the open file button  or the ellipsis button next to the **Input File:** field. If you haven't already specify the location of GhostScript in the [Application Settings dialog](#), you will be prompted for its

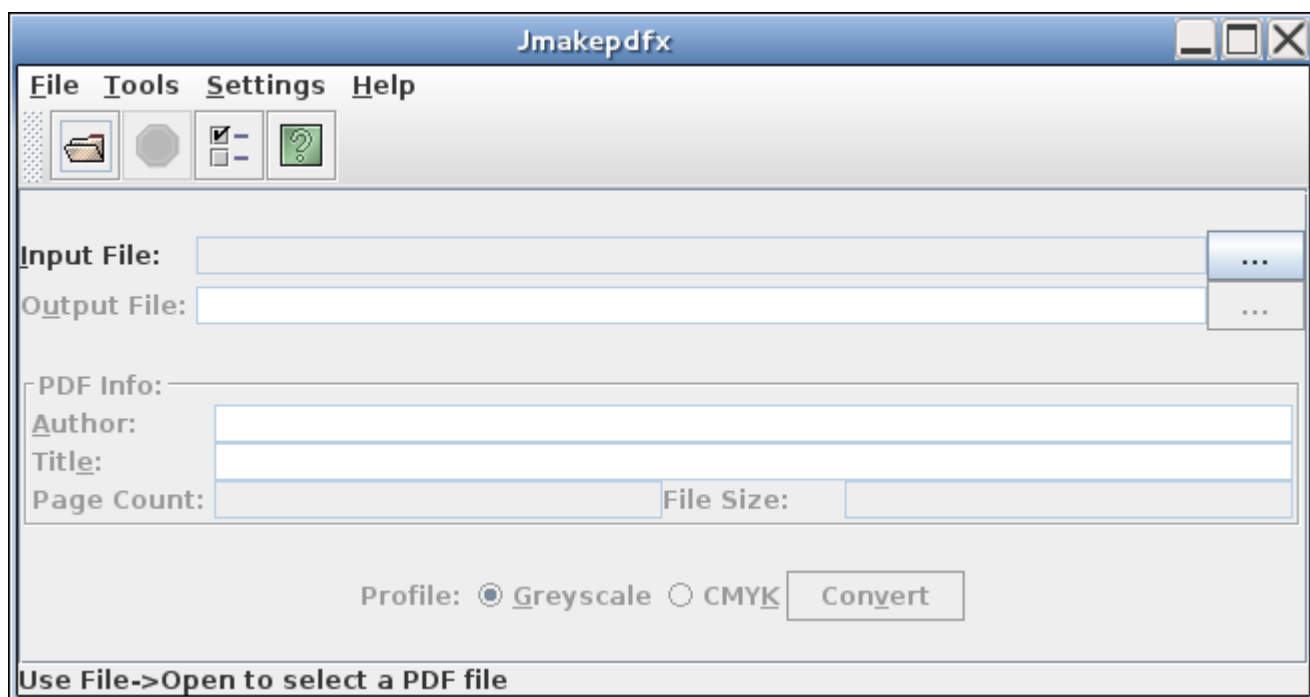


Figure 1: Main Window (Initial View)

location. For example, `C:\Program Files\GS\GS8.70\bin\gswin32c.exe` or `/usr/bin/gs`.

Jmakepdfx will read the meta data from the PDF file and fill in the author and title fields, which you can modify if you like. It will also fill in the page count and file size fields for your information and the default name of the output file. **Note that the output file has not been made at this point.** If you want to change the name or location of the output file you can do so by editing the file name or selecting the ellipsis button next to the **Output File:** field. The main window should now look something like [Figure 2](#).

Note that if your file size is very large (for example, over 1 megabyte) you may need to increase the process time-out value in the [Applications Settings dialog](#) before proceeding.

2. Select **Greyscale** or **CMYK**, depending on whether you want to convert your file to grey-scale or CMYK colour space.
3. When you're happy with all the settings, click the **Convert** button. This will run GhostScript. The page number currently being processed will be displayed at the bottom of the main window, which gives you an idea of how the conversion is progressing.

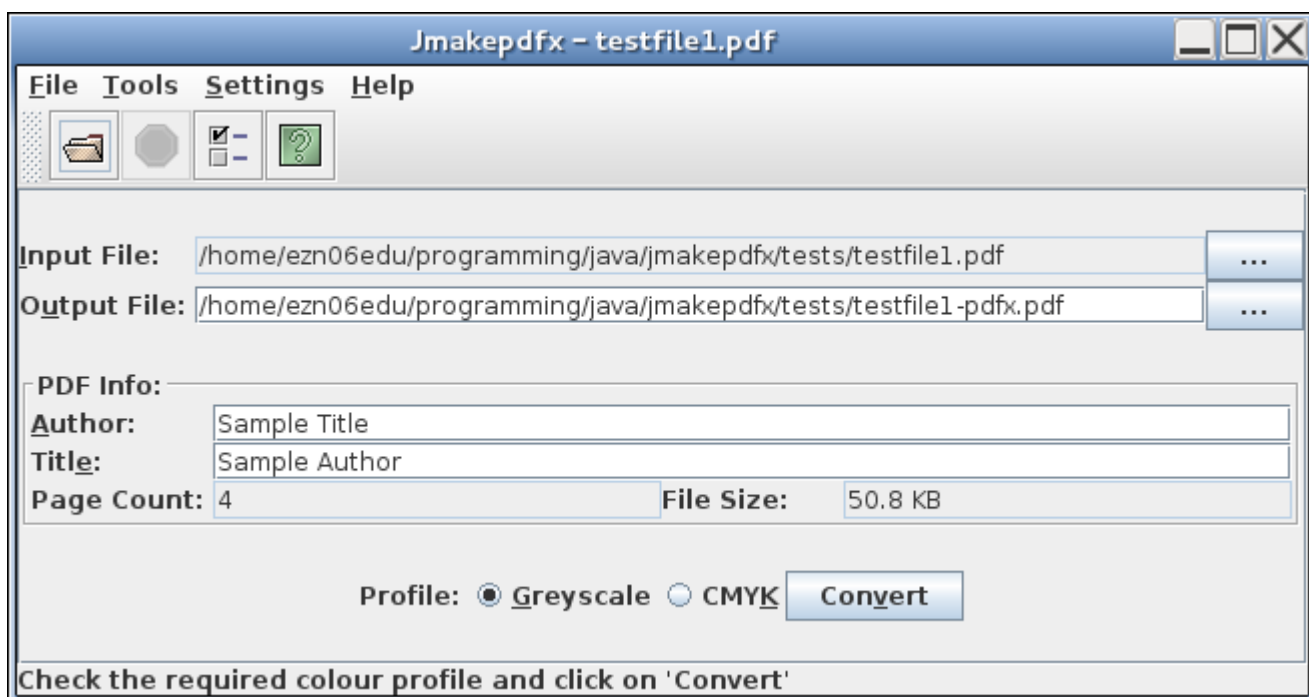


Figure 2: Main Window (PDF Loaded)

On completion, Jmakepdfx will try to open the resulting PDF file using your designated viewer. If you haven't set the PDF viewer in the [Application Settings box](#), you will be prompted for its location. For example, C:\Program Files\Adobe\Acrobat 7.0\Reader\AcroRD32.exe or /usr/bin/acroread.

Note that this application uses GhostScript's /prepress setting, so the resulting PDF file is likely to be bigger than the original.

If you get a "Process timed-out" error, you'll need to increase the maximum process time using the [Applications Settings dialog](#) and try again.

3 Application Settings

Application settings can be modified using the Settings → Edit... menu item, which will open the **Properties** dialog box ([Figure 3](#)).

The **Startup Directory** is the default directory (folder) to start looking for PDF files when you next use this application. There are three possible settings:

Home Select this button if you want the default directory to be your home directory.

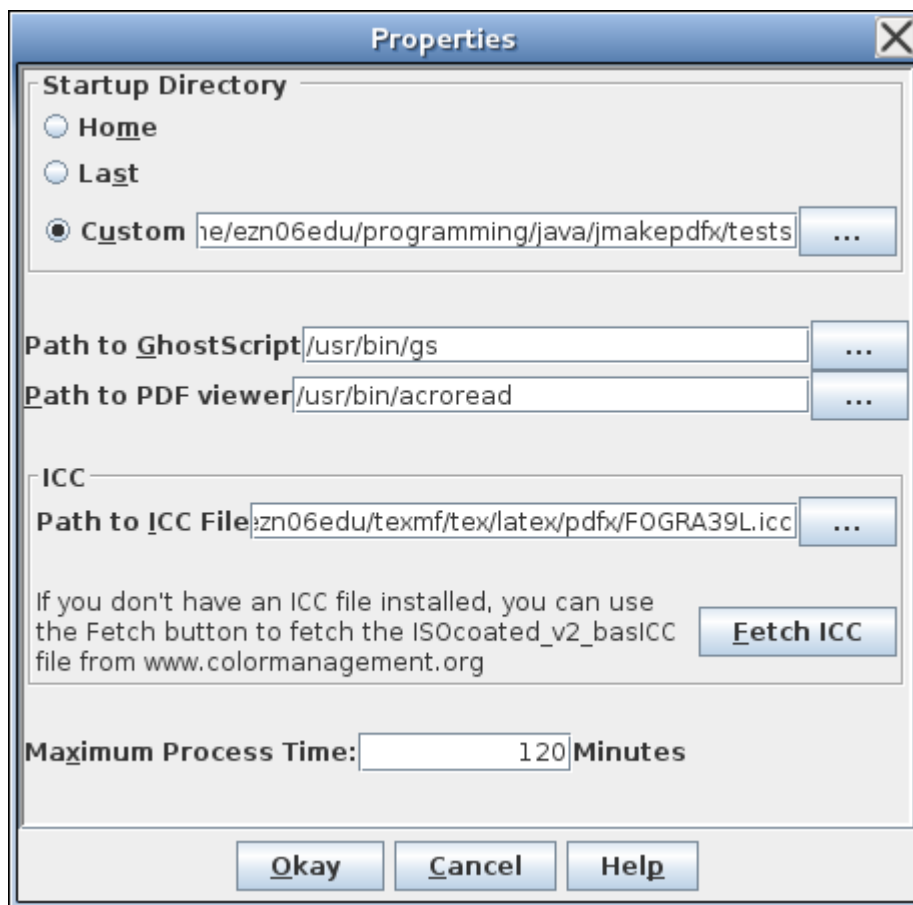


Figure 3: Properties Dialog Box

Last Select this button if you want the default directory to be the last one you visited.

Custom If you want a specific directory as your default, select this button and enter the relevant directory in the field next to it or use the ellipsis button to choose the directory.

The application needs to know where the GhostScript executable is. For example, on Windows it might be `C:\Program Files\GS\GS8.70\bin\gswin32c.exe` whereas on a Unix-like system it might be `/usr/bin/gs`. You can enter the relevant path in the **Path to GhostScript** field or use the ellipsis button next to the field to find it on your filing system.

The application also needs to know what PDF viewer you want to use. For example, on Windows you might want to use Adobe Reader, which may be located somewhere like `C:\Program Files\Adobe\Acrobat 7.0\Reader\AcroRD32.exe`. You can either enter the path in the **Path to PDF viewer** field or use the ellipsis button next to it to find it on your filing system.

GhostScript needs an ICC file for the colour management. If you don't have one installed, you can use the **Fetch ICC** button to fetch one from www.colormangement.org. Once you have an ICC file installed on your computer, specify the file location in the **Path to ICC File** field or use the ellipsis button to find it on your filing system.

Jmakepdx imposes a time limit on processes in the event a process gets stuck. The default is set to 180 minutes (3 hours). If you have a very large PDF file (large as in file size rather than total number of pages) you may need to set a higher limit in the **Maximum Process Time:** field. Changing this field won't affect a currently running process, as the time limit is set at the start of the process execution.

Acknowledgements

Thank you to my son, Cameron, for drawing a logo.